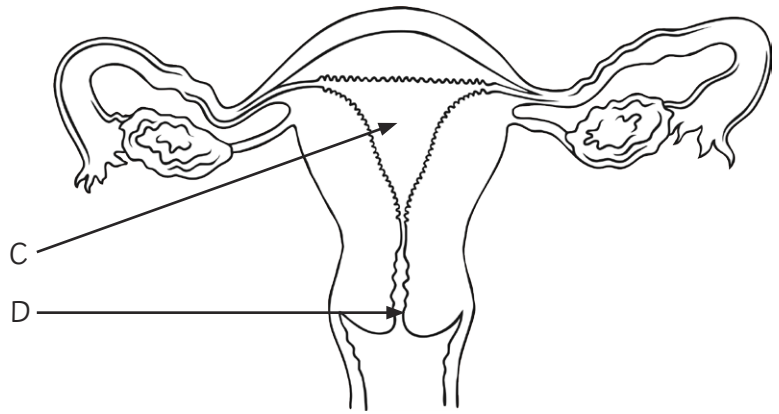
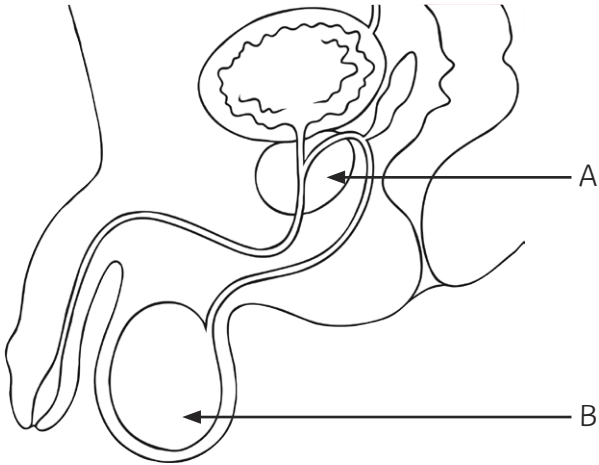


Name:	Class:	Date given:
		Date due in:

Human Reproduction

1. Name the parts labelled A, B, C and D on the diagrams below. [4]



A is _____

C is _____

B is _____

D is _____

2a. What are the male sex cells called? [1]

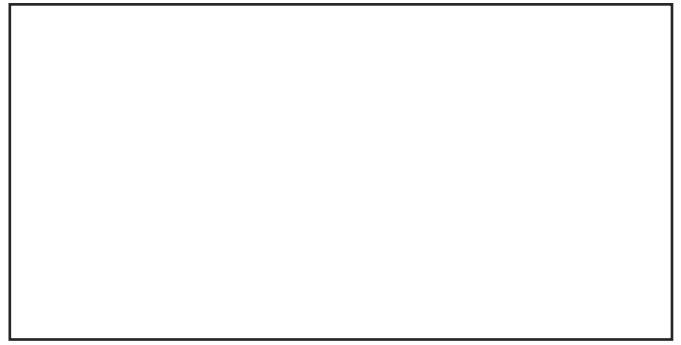
2b. Where in the body are male sex cells produced? [1]

2c. Draw a simple diagram of a male sex cell. [1]

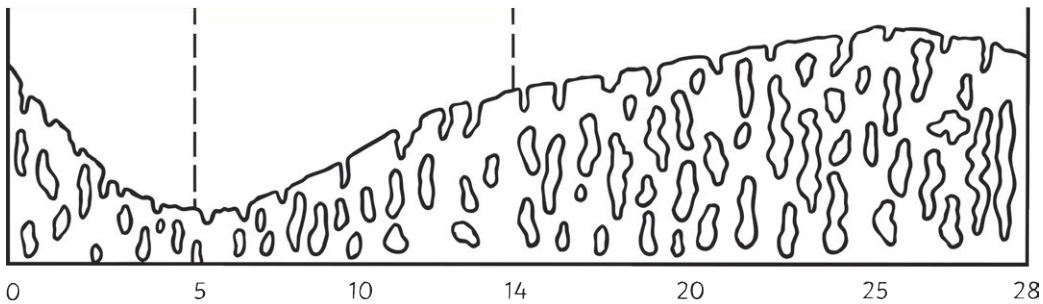
3a. What are the female sex cells called? [1]

3b. Where in the body are female sex cells produced? [1]

3b. Draw a simple diagram of a female sex cell. [1]



4. Use the diagram below and describe the stages of the menstrual cycle. [4]



5. Use the words from the box to complete the sentences below. [2]

_____ is the stage of a human life cycle when a child develops into an adult.
 _____ is the process of physical changes in which the body of a girl or boy matures and becomes able to reproduce.

puberty adolescence

Learning Outcomes (tick if achieved)

Q1	Structure of male and female reproductive systems	
Q2,3	Structure and function of male and female gametes	
Q4	Stages of the menstrual cycle	
Q5	Puberty and adolescence in humans	

Human Reproduction Answers

1. A is **gland (prostate)** C is **uterus / womb**
B is **testes** D is **cervix**

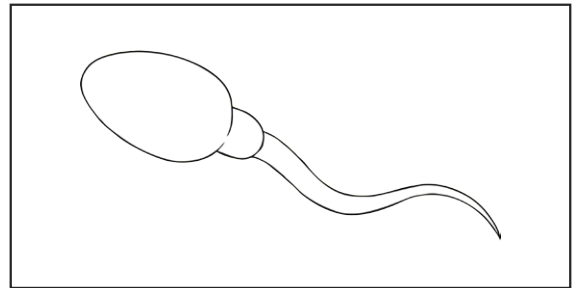
2a. What are the male sex cells called? [1]

sperm

2b. Where in the body are male sex cells produced? [1]

testes

2c. Draw a simple diagram of a male sex cell. [1]



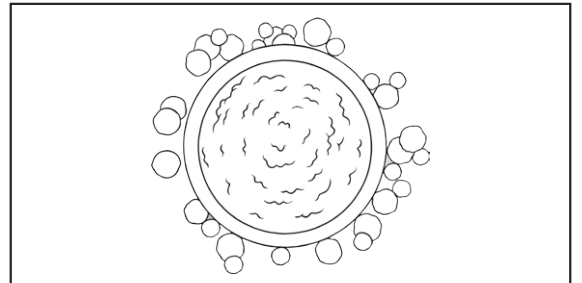
3a. What are the female sex cells called? [1]

egg

3b. Where in the body are female sex cells produced? [1]

ovaries

3c. Draw a simple diagram of a female sex cell. [1]



4. Use the diagram below and describe the stages of the menstrual cycle. [4]

Max 4 marks from:

- **Day 1 to 4: period / lining breaks down / bleeding**
- **Day 4 to 14: lining rebuilds**
- **Day 14: egg released / ovulation**
- **Day 14 to 28: lining maintains**
- **Day 28: cycle restarts / new cycle / if pregnant then no period occurs**

5. Use the words from the box to complete the sentences below. [2]

adolescence is the stage of a human life cycle when a child develops into an adult.

puberty is the process of physical changes in which the body of a girl or boy matures and becomes able to reproduce.