

# Human Reproduction Test Yourself 3

## Match and Draw

Draw a line to match the organ with its function.

Ovaries

Oviducts

Urethra

Cervix

A ring of muscle at the entrance to the uterus, keeps the baby in place.

A tube that carries urine from the bladder to outside the body.

Carry an egg to the uterus.

Contains egg cells.

## Twins: True or False?

- Identical twins can be of different sexes. \_\_\_\_\_
- Identical twins are produced from one egg and one sperm. \_\_\_\_\_
- Identical twins must be of the same sex. \_\_\_\_\_
- Non-identical twins have the same genetic information. \_\_\_\_\_
- Non-identical twins are produced from one egg and one sperm. \_\_\_\_\_

## Anagrams

Rearrange the following to show words connected to reproduction.

Billicaum dorc \_\_\_\_\_

Spein \_\_\_\_\_

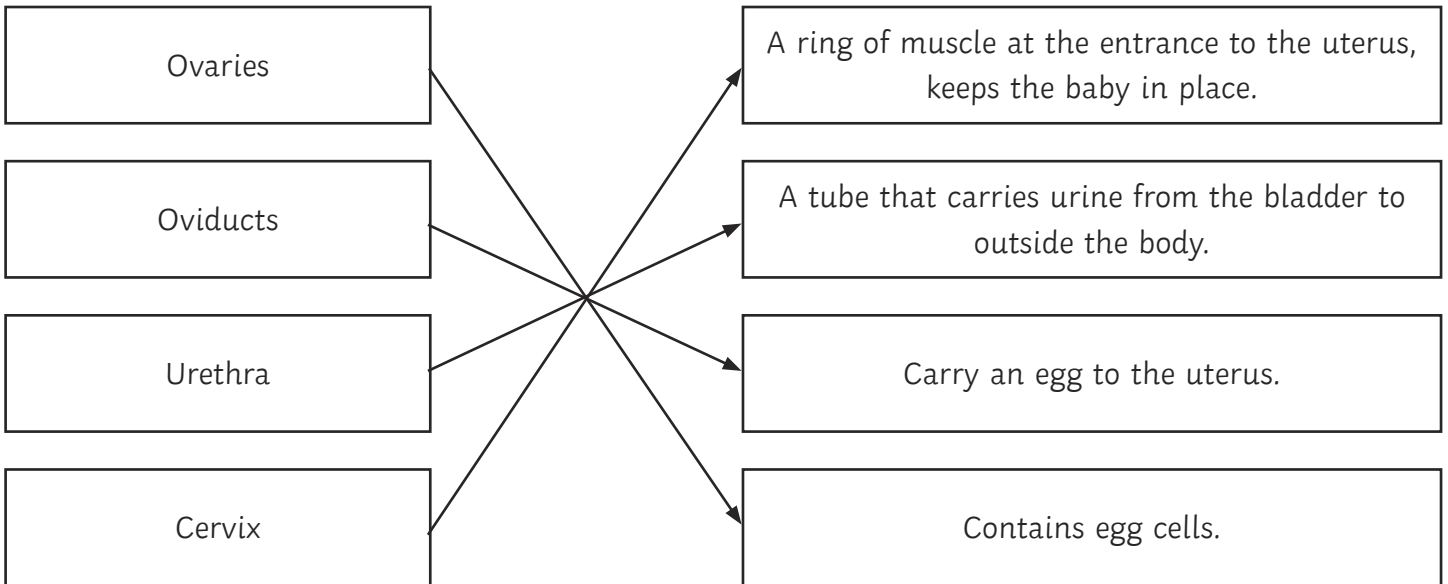
Tapclaen \_\_\_\_\_

Yavro \_\_\_\_\_

# Human Reproduction Test Yourself 3 - Answers

## Match and Draw

Draw a line to match the organ with its function.



## Twins: True or False?

- Identical twins can be of different sexes. **False**
- Identical twins are produced from one egg and one sperm. **True**
- Identical twins must be of the same sex. **True**
- Non-identical twins have the same genetic information. **False**
- Non-identical twins are produced from one egg and one sperm. **False**

## Anagrams

Rearrange the following to show words connected to reproduction.

Billicaum dorc - **Umbilical cord**

Spein - **Penis**

Tapclaen - **Placenta**

Yavro - **Ovary**