

## AUSTRALIA



# AMAZING GIANT REEF DISCOVERY



Schmidt Ocean Institute

Scientists used an underwater robot, named **Subastian**, to explore the reef and take this image

**Scientists have discovered a huge coral reef as tall as a skyscraper in Australia's Great Barrier Reef.**

The reef is 500 metres tall – that's taller than the Empire State Building, the Eiffel Tower on top of Big Ben, or 100 giraffes! It was found 81 miles off the coast of Australia, by scientists who were mapping the seabed.

The newly discovered reef has a lot of sponges, sea fans and soft corals and is home to reef fish and grey reef sharks.

## USA

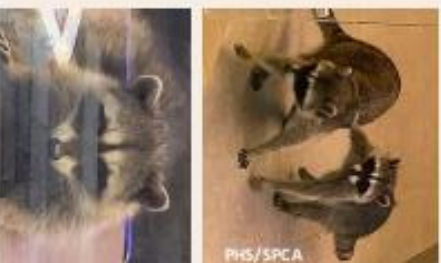


# BANK BANDITS

**Two masked criminals have broken into a bank to steal... biscuits!**

The break-in happened in California, USA. The cheeky raccoons put on a very professional job. It's believed they climbed a tree, jumped onto the bank's roof and snuck into the building's air vents before leaping through some ceiling tiles onto the floor of the bank. Wow!

A local animal rescue centre was called to help shoo the raccoons back outside. One of the team explained: "They were in the break room eating a tin of almond cookies. I guess they struck gold!"



PHS/SPCA



"Where are those biscuits? You check over there!"

@garvinthomas/Twitter

## CHINA



# SCHOOL GOES FOR A WALK

**A primary school in China has been 'walked' to its new home on 198 mechanical legs!**

Lagena Primary School was built in 1935 in the city of Shanghai. The old building needed to be moved to make way for a new business district and engineers came up with an ingenious solution! First, workers dug under the building to install the 198 legs. The robotic legs extended upwards to lift the building and slowly began to move forwards, step-by-step. It took 18 days to move the building 62 metres to its new home.



SouthChinaMorningPost/YouTube

751

## World News

How tall is the coral reef?

600 metres

500 metres

700 metres

What were the scientists doing when they discovered the reef?

Looking at fish

mapping the seabed

studying sponges

What sort of sharks are mentioned living on the reef in the article?

Great white sharks

Hammerhead sharks

grey reef sharks

Where did the break-in happen?

California

China

Chicago

Who was called to help?

local vets

animal rescue

local police

What type of the biscuits were the raccoons eating?

Custard creams

almond cookies

rich tea

How was the primary school in China moved?

on a lorry

on rolling logs

on mechanical legs

What year was the school built?

1945

1953

1935

How long did it take to move the 62 metres?

81 days

17 days

18 days

751

## World News

How tall is the coral reef?

What were the scientists doing when they discovered the reef?

What sort of sharks are mentioned living on the reef in the article?

Where did the break-in happen?

Who was called to help?

What type of the biscuits were the raccoons eating?

How was the primary school in China moved?

What year was the school built?

How long did it take to move the 62 metres?

How many different types of biscuit can you name?