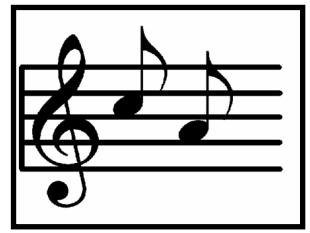




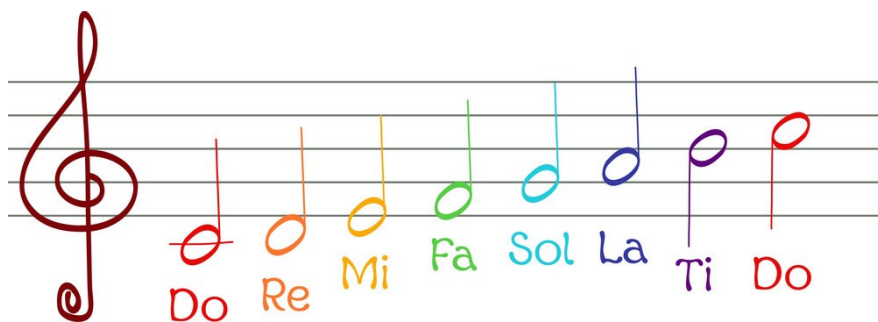
# Year 8 Music



## Spring Term Home Learning Pack

### Topic:

1) To explore pentatonic patterns and tonic sol-fa.



2) To perform a piece of music in the style of the Blues

Hi Year 8,

Mrs Seabrook here. I am the Assistant Head of Teaching and Learning and the music coordinator at St. Anthony's School.

This term you will be learning how to perform music using short melodies and accompaniments. We will cover Pentatonic scales and tonic sol-fa. After half term we will perform a song based on an American cartoon and in the style of the Blues.

Remember to check the Home Learning Zone on the school website. The music page includes live music recordings, music and Makaton songs, music videos, digital music books and more!

**Please complete the music pages in your homework booklet first.** This is a book of extra activities for you.



Have fun!



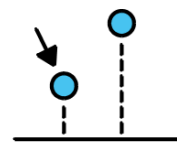
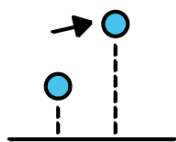
Mrs Seabrook



Mr Godon  
Year 8 Teacher



# Key Word - Pitch



how high or low  
a sound is played



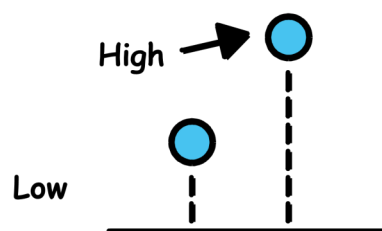
## Activity 1 -Pitch

Learn the word 'Pitch'

When we talk about Pitch we use the words  
**high** and **low**.

Target:

I can remember what the word Pitch means



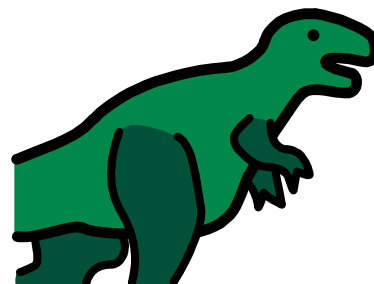
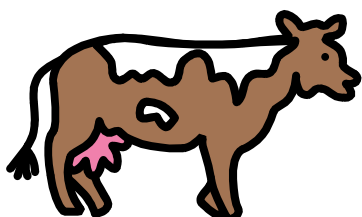
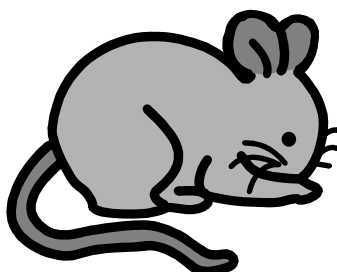
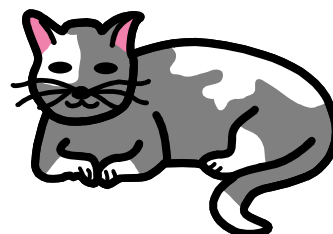
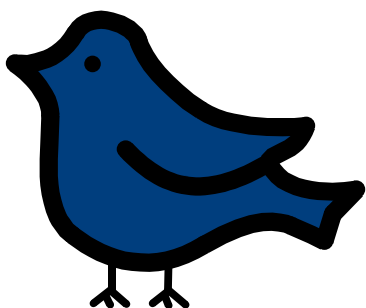


## Activity 2 -Pitch

Pitch is how high or low a sound is. Look at the pictures below. Decide if each animal makes a high pitch or a low pitch.



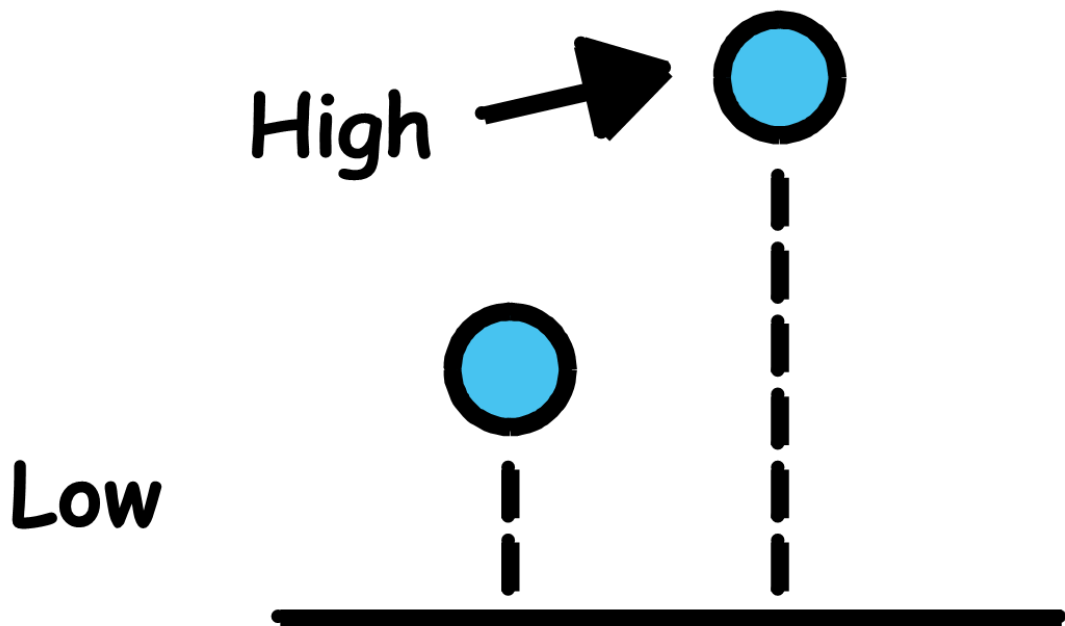
Write high (H) or low (L) under each picture.



### Activity 3.

Follow the pitch of your favourite song. When the music goes high, make your voice go high. If it goes low try and follow the pitch.

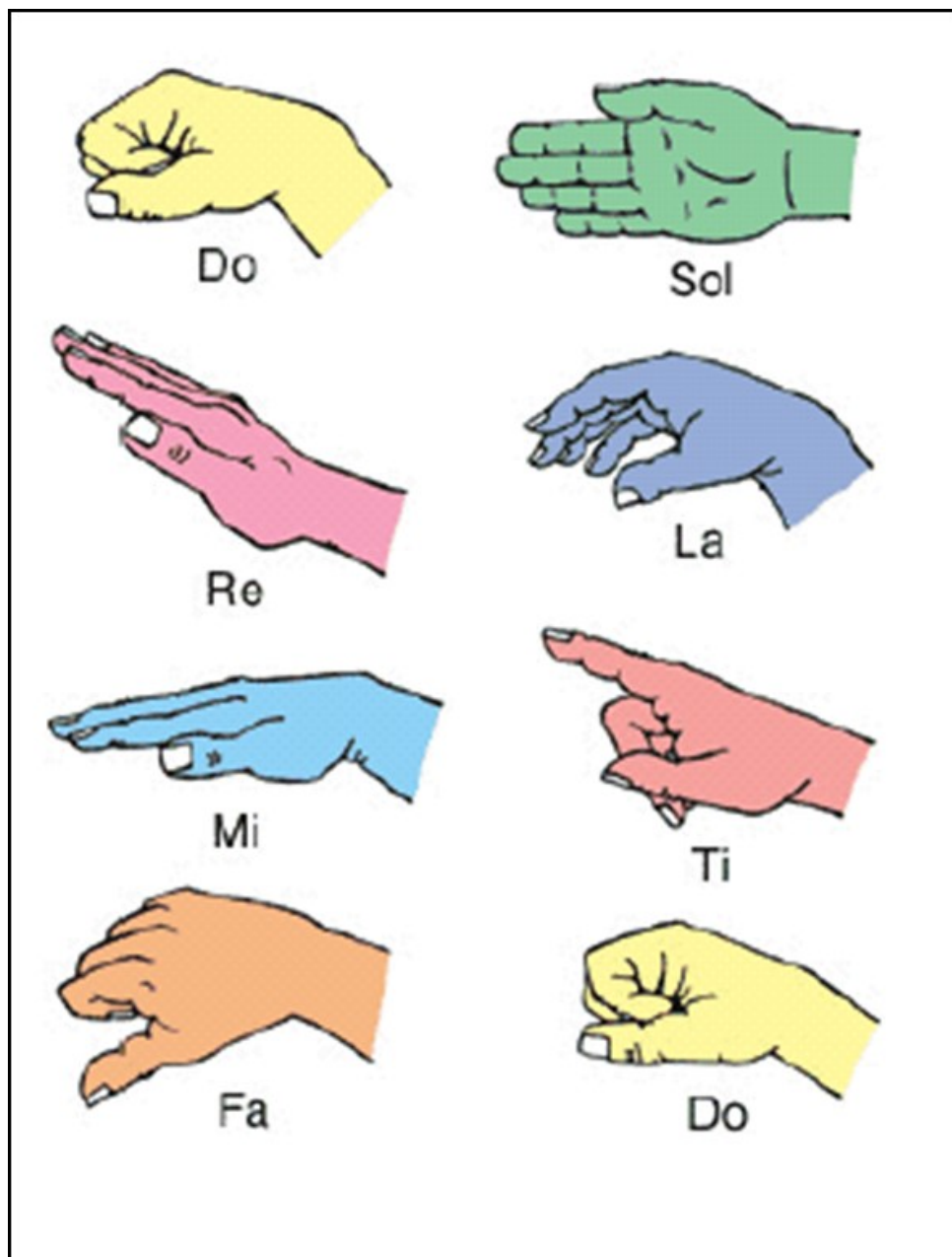
Write the name of your favourite song here



## Activity 4

John Curwen invented a system of notation called Tonic Sol-fa. Each note in the scale is given a note name and a hand sign.

Learn the hand signs for each note. We will add these to music in school.



# Activity 5

Each hand sign forms part of a scale. Try and perform the scale using the right hand signs.

A musical staff in treble clef showing a scale of notes: C (red), D (orange), E (yellow), F (green), G (teal), A (purple), B (pink), and C (red). Below the staff are eight hand signs, each in a colored circle with a corresponding letter or note name: 'do' (red), 're' (orange), 'mi' (yellow), 'fa' (green), 'sol' (teal), 'la' (purple), 'ti' (pink), and 'do' (red). Below these are eight hand gestures, each in a colored glove matching the sign above it.

A collection of eight hand signs, each labeled with a note name: Do (yellow, fist), Sol (green, open palm), Re (pink, index finger up), La (blue, index finger up), Mi (light blue, index finger up), Ti (red, index finger up), Fa (orange, fist), and Do (yellow, fist).

## Activity 6

Use the song 'A Little Echo' on the home learning area to sing this music.

The link is here: <https://st-ants.org/moodle30/course/view.php?id=19#section-11>

So fa mi re mi fa  
Fa mi re do re mi  
So fa mi fa so la  
La la so so la ti do

5 4 3      2 3 4  
4 3 2      1 2 3  
5 4 3      4 5 6  
6 6 5      5 6 7 8

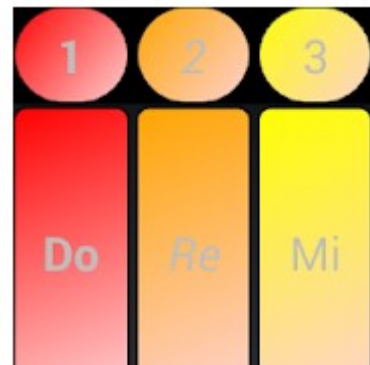


G F E      D E F  
F E D      C D E



## Activity 7 -Pitch

Type Do-Re-Mi onto the App or Google Play Store. Explore the games and learn about pitch,



## Part 2: After Half Term

### Activity 8

Sing along to our Cops and Robbers song.

