

Art and Design



Entry Level Pathways



100% Coursework
4 units of work,
fulfilling the assessment objectives.



Research information and ideas.

Develop ideas using appropriate materials and techniques.

Produce and present an outcome in response to a task or theme.



Units of work

Drawing and Painting

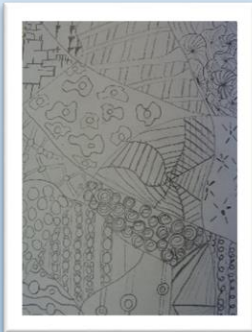
Printmaking

Three Dimensional design (Sculpture)

Ceramics



Drawing and Painting

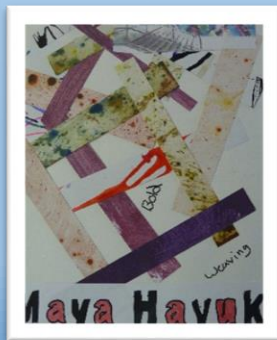


Research information
and ideas

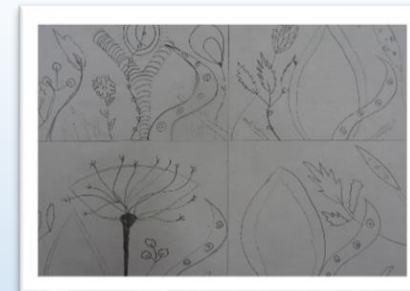


Produce and present an outcome in
response to a task or theme

Develop ideas using appropriate materials,
techniques and processes



Printmaking

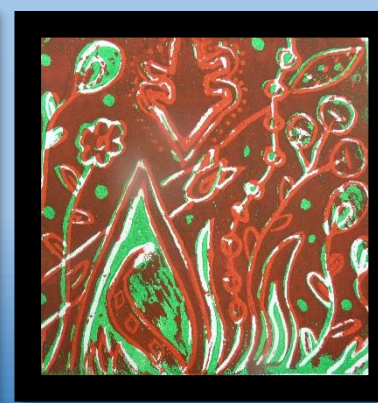
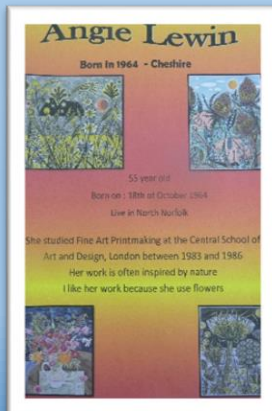
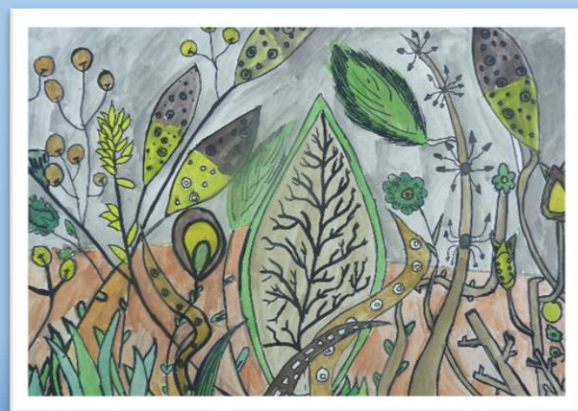


Research information
and ideas

Develop ideas using appropriate materials,
techniques and processes

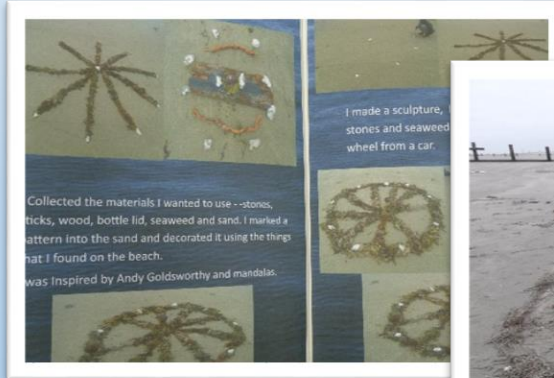
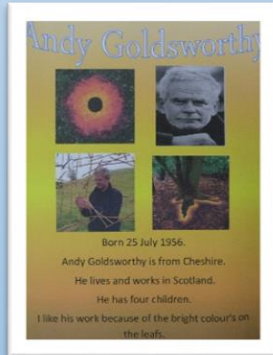
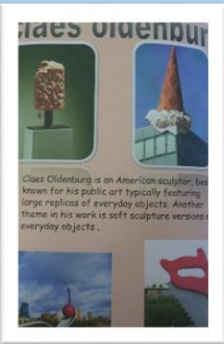
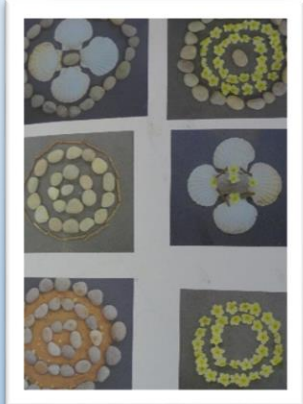


Produce and present an outcome in
response to a task or theme



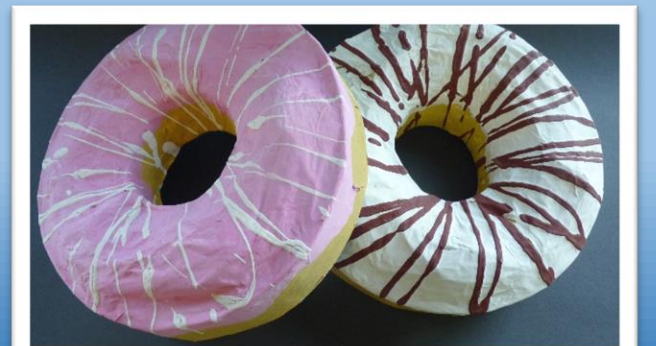
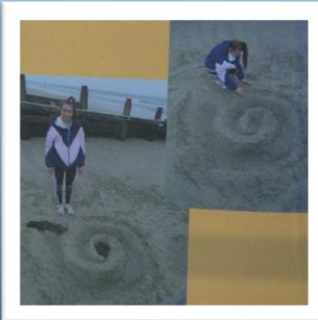
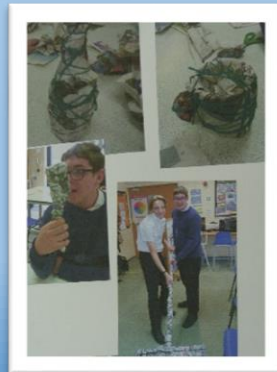
Three Dimensional Design (Sculpture)

Research information
and ideas



Produce and present an outcome in
response to a task or theme

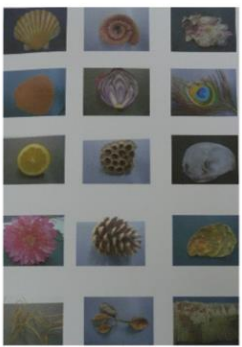
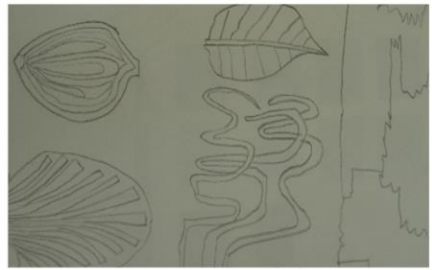
Develop ideas
using
appropriate
materials,
techniques and
processes



Ceramics

Research information and ideas

Produce and present an outcome in response to a task or theme



Develop ideas using appropriate materials, techniques and processes

