

# Art and Design



# Entry Level Pathways



100% Coursework  
4 units of work,  
fulfilling the assessment objectives.



Research information and ideas.

Develop ideas using appropriate materials and techniques.

Produce and present an outcome in response to a task or theme.





# Units of work

Drawing and Painting

Printmaking

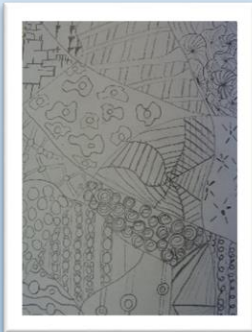
Three Dimensional design (Sculpture)

Ceramics





# Drawing and Painting

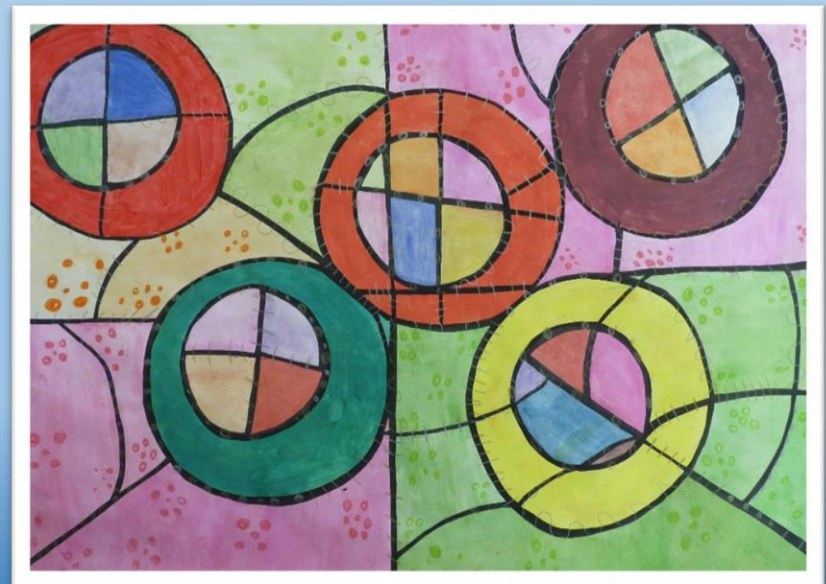
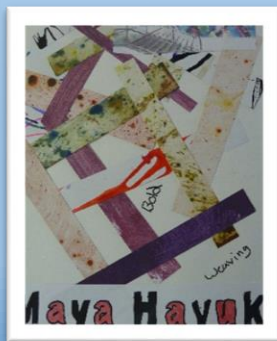


Research information  
and ideas



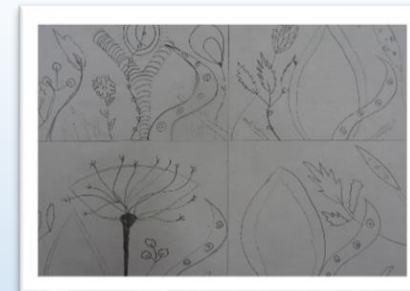
Produce and present an outcome in  
response to a task or theme

Develop ideas using appropriate materials,  
techniques and processes





# Printmaking

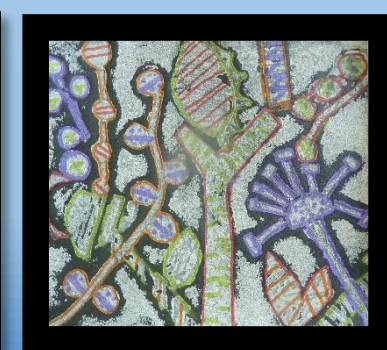
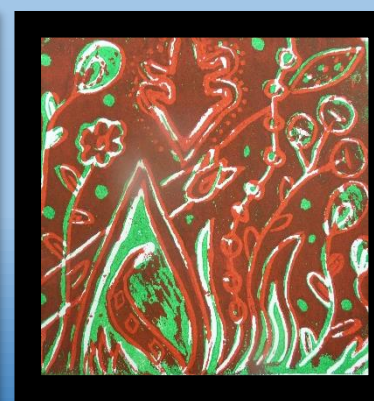
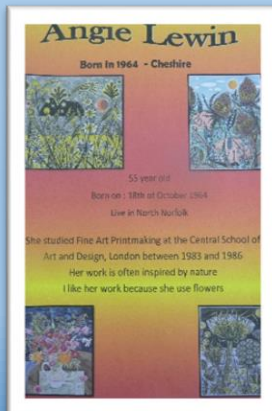
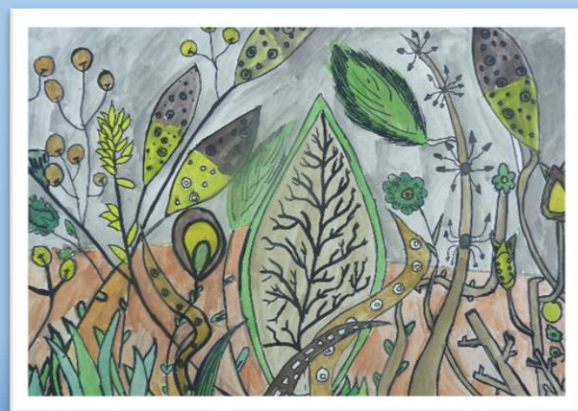


Research information  
and ideas

Develop ideas using appropriate materials,  
techniques and processes

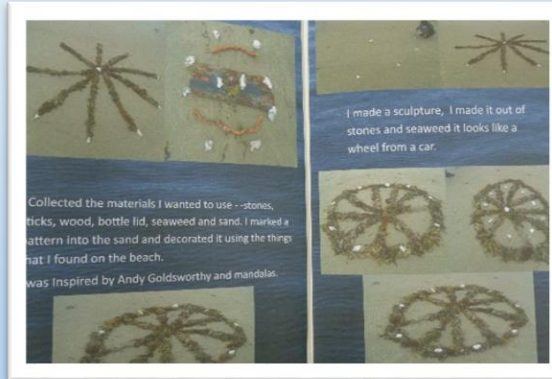
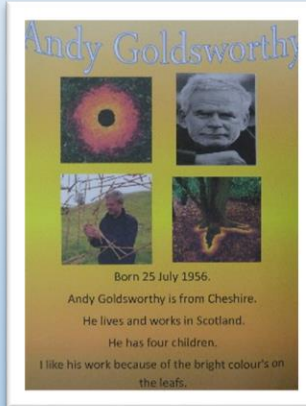
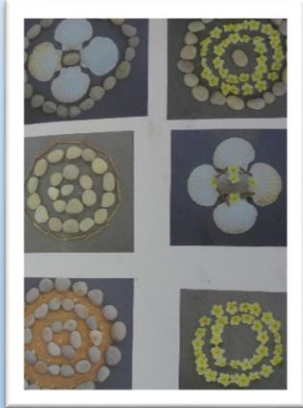


Produce and present an outcome in  
response to a task or theme





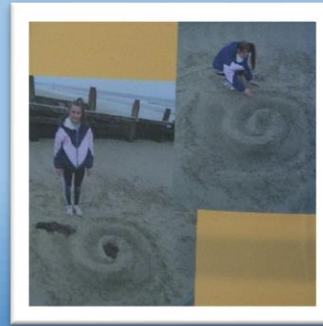
# Three Dimensional Design (Sculpture)



Research information  
and develop ideas.

Produce and present an outcome in  
response to a task or theme.

Develop ideas  
using  
appropriate  
materials,  
techniques and  
processes

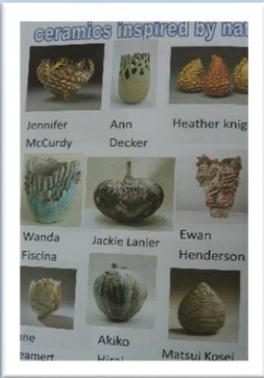
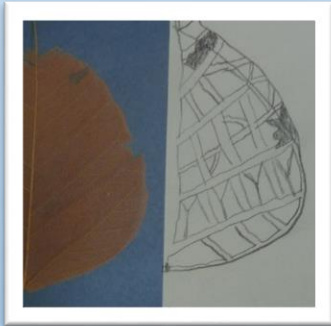






# Ceramics

Research information and ideas



Produce and present an outcome in response to a task or theme

Develop ideas using appropriate materials, techniques and processes

