

Art and Design



Entry Level Pathways



100% Coursework
4 units of work,
fulfilling the assessment objectives.



Research information and ideas.

Develop ideas using appropriate materials and techniques.

Produce and present an outcome in response to a task or theme.



Units of work

Drawing and Painting

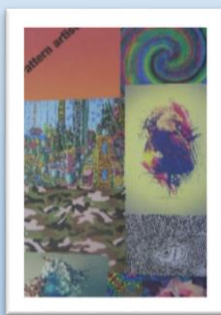
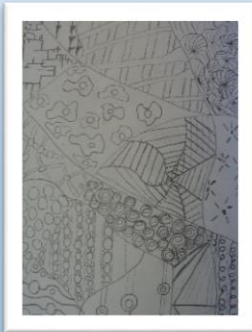
Printmaking

Three Dimensional design (Sculpture)

Ceramics



Drawing and Painting

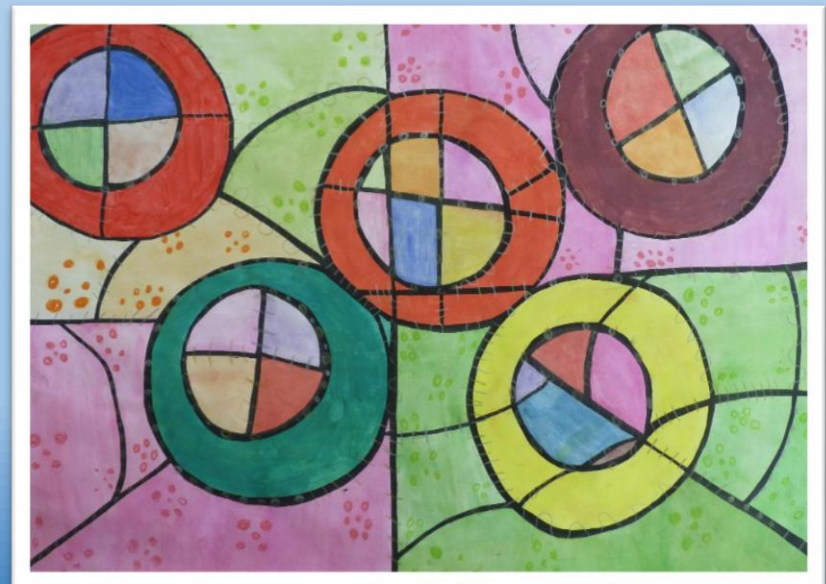
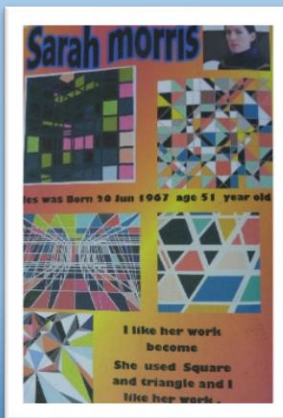


Research information
and ideas

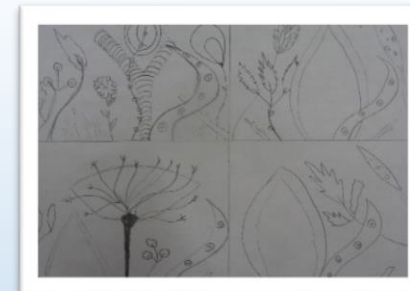


Produce and present an outcome in
response to a task or theme

Develop ideas using appropriate materials,
techniques and processes



Printmaking

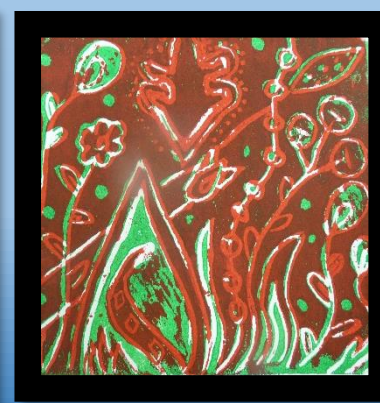
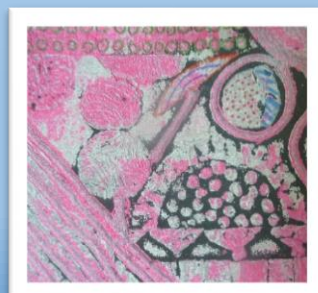
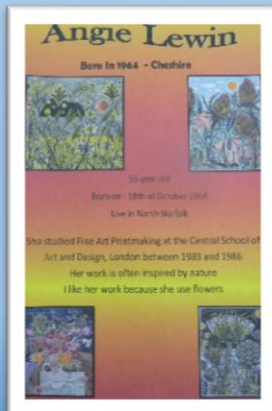
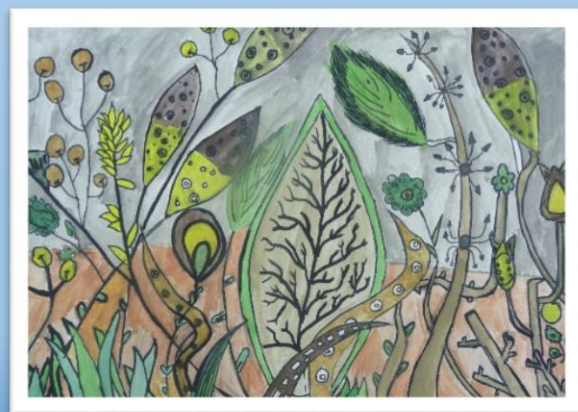


Research information and ideas

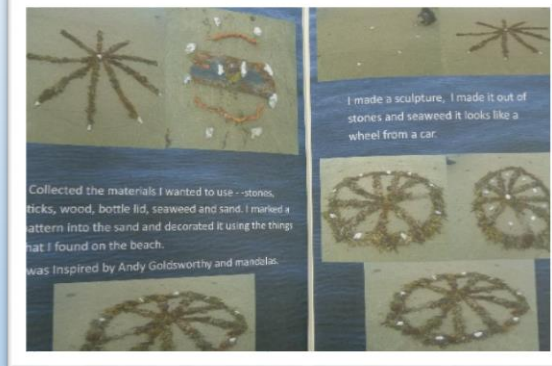
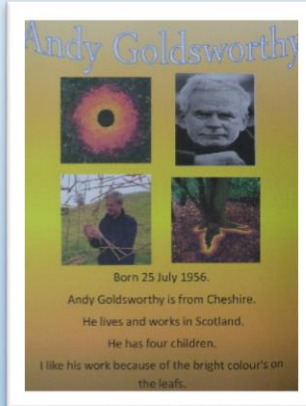
Develop ideas using appropriate materials, techniques and processes



Produce and present an outcome in response to a task or theme



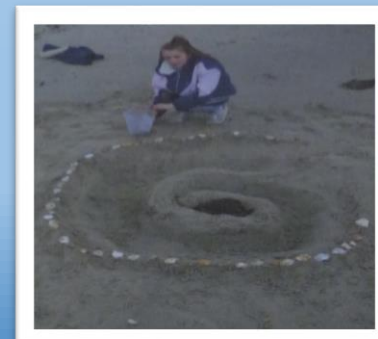
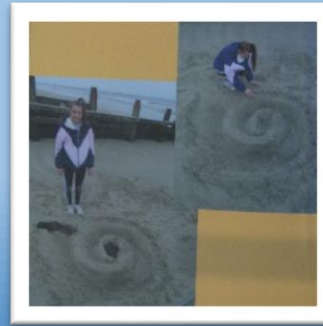
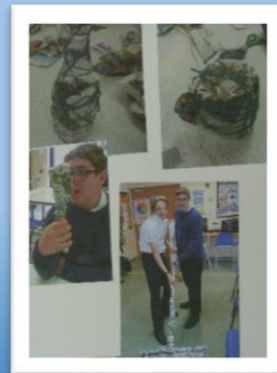
Three Dimensional Design (Sculpture)

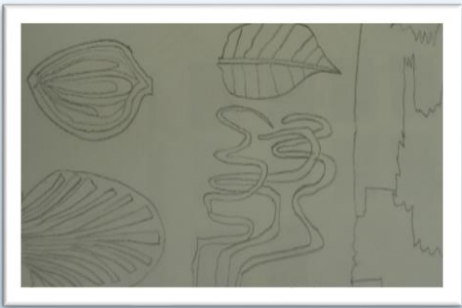


Research information and develop ideas.

Produce and present an outcome in response to a task or theme.

Develop ideas using appropriate materials, techniques and processes





Ceramics

Research information and ideas



Produce and present an outcome in response to a task or theme

Develop ideas using appropriate materials, techniques and processes

